



BHARATHI CONSTRUCTION

Building Quality Homes for Peaceful Life



www.bharathiconstruction.com

About us

- ✔ Bharathi Construction is a leading construction firm operating throughout South Chennai. We are proud to improve the lives of Indians every day by building residential construction site development.
- ✔ Our highly-skilled teams have constructed many of the Residential Apartments Building construction projects in "SOUTH CHENNAI" that benefit the communities in which we live and work.
- ✔ Founded in Chennai on 'August 2014' by Managing partner Mr. V. KAMALAKANNAN and partner Mrs. D. BHARATHI, Bharathi Construction has become one of the pioneering construction companies in South Chennai.
- ✔ Mr.V.KAMALAKANNAN Our Company Managing Partner began with a dream to make extraordinary great quality living spaces at reasonable expenses for their clients; this vision is truly named as Bharathi Construction.
- ✔ He is a qualified civil engineer, he has an exceptionally got strong record with vast experience in the construction industry like residential apartment buildings, Commercial buildings, and multi-story buildings in INDIA and abroad since 1997 and he has grown the Bharathi Construction company in the last 10 years



BHARATHI CONSTRUCTION (ISO:9001:2015)

MISSION | VISION | VALUES



Values.

Quality Assurance
Transparency and Integrity:
Innovation and Technology
Timely Delivery

01



Vision.

To ensure the longevity of our company through repeat and referral business achieved by customer satisfaction in all areas including timeliness, attention to detail and service-minded attitudes.

02

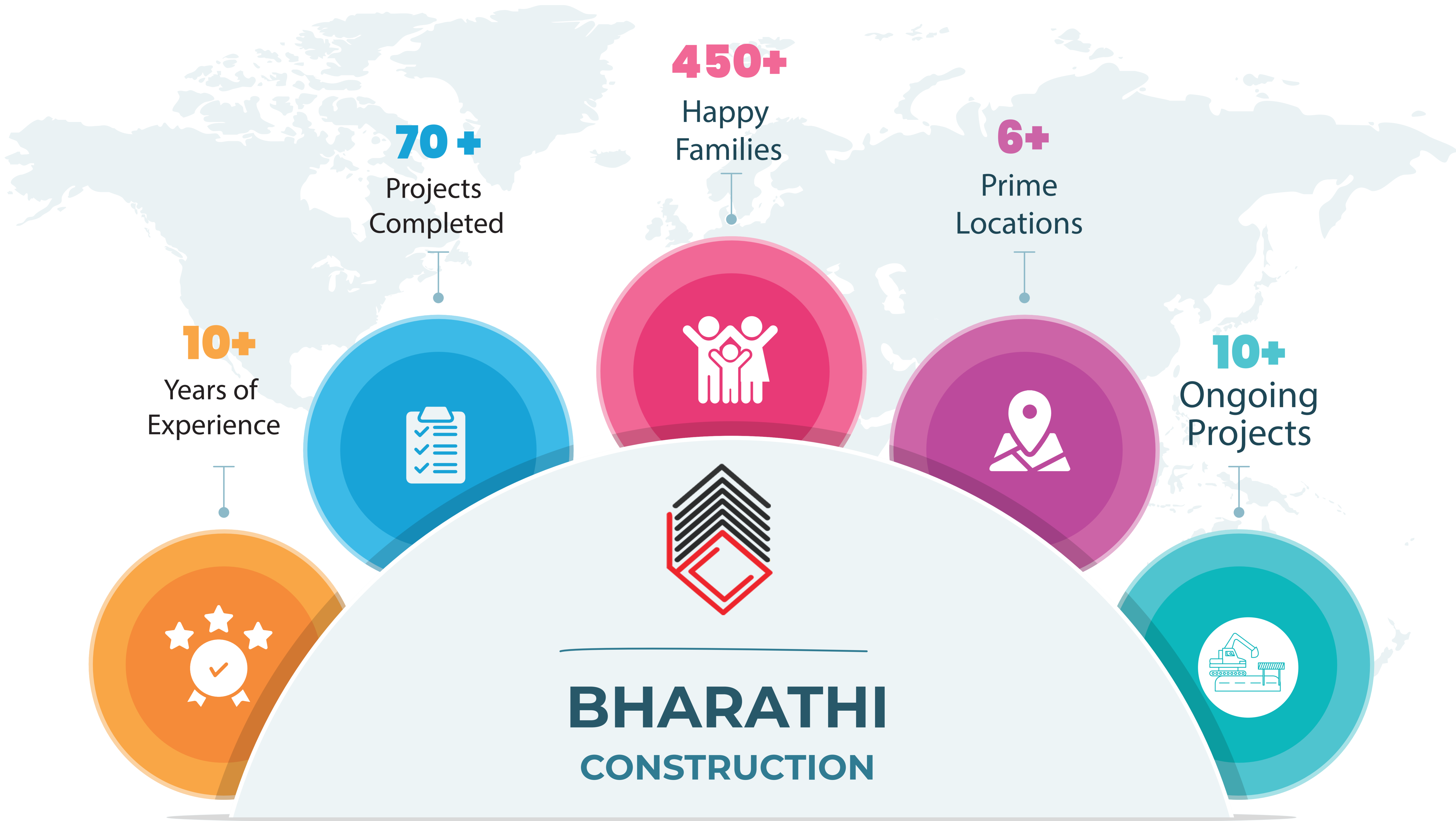


Mission.

Creating a brand name synonymous with 100% quality homes & customer satisfaction. Designing, Approving and Constructing a community of satisfied homeowners.

03

In Bharathi Construction, the value for customers lies at the heart of every project and interaction.



**BC
Projects**

The infographic features a central dark blue circle with the text 'BC Projects' in white. A dashed white line forms a semi-circle around the left side of this circle. A black line extends from the right side of the circle, branching into three paths. Each path ends at a colored circle (red, orange, and teal) which is connected to a corresponding colored rounded rectangular box. The boxes contain a number in a circle and a project status in bold black text. The background is a light gray world map.

8

READY TO OCCUPY

10

**UNDER
CONSTRUCTION**

2

**UPCOMING
PROJECTS**

DEVELOPMENT LOCATION

 **East Tambaram**

 **Pammal**

 **Pallavaram**

 **pozhichalur**

 **Kundrathur**

 **Anakaputhur**



Joint Venture



I wanted to take a moment to express my sincere gratitude for embarking on this joint venture with us. Your expertise, dedication, and collaborative spirit have been invaluable throughout this journey.

Together, we've achieved milestones that seemed daunting initially, and I'm truly proud of what we've accomplished. Your commitment to excellence and professionalism has not only strengthened our partnership but has also set a remarkable standard for future endeavors.

I firmly believe that our joint venture is just the beginning of many more successful collaborations to come. I look forward to continuing our work together and exploring new opportunities for growth and innovation.

Once again, thank you for your trust, support, and hard work. Here's to a bright and prosperous future ahead!

Warm regards,

WE BHARATHI CONSTRUCTION MEMBER OF



**BUILDERS
ASSOCIATION
OF INDIA**

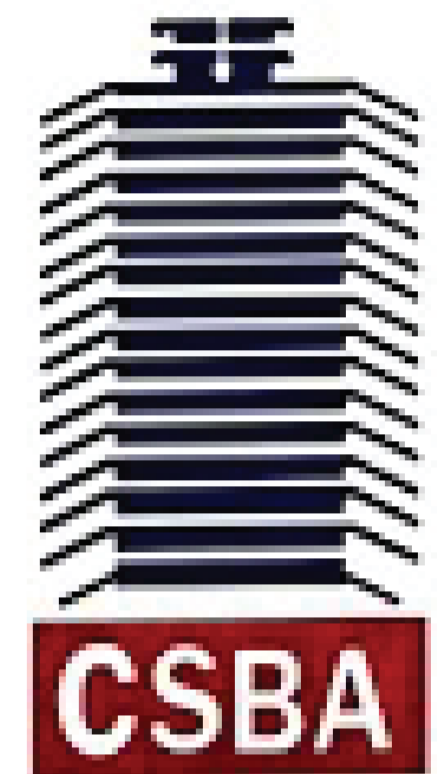


**FEDERATION OF
ALL INDIA
REAL ESTATE
ASSOCIATION**



Flat Promoters Association
(Affiliated Body of Builders Association of India)

**FLAT
PROMOTERS
ASSOCIATION**



**CHENNAI
SOUTHERN
BUILDERS
ASSOCIATION**

CORPORATE OFFICE:

**No.26/8 Block No.2A, 2nd Floor Teacher, Krishnasamy St,
Muthamizh Nagar, Pammal, Chennai - 600075**